



How to Configure your Browser to Use Peace Corps Grants Online (PCGO)

Purpose

This tip sheet outlines the steps for Peace Corps Grants Online (PCGO) portal users to gain access and submit grant applications via <https://pcgo.peacecorps.gov/login.html>. The PCGO portal is configured to use Transport Layer Security (TLS) version 1.2 for secure data communications. Some browsers on certain platforms will need additional configuration to access the PCGO portal and to submit grants applications. All computers at Peace Corps posts are enabled and configured to allow access to the portal without additional steps. Follow the steps below to configure your browser.

Steps

1. Use the TLS 1.2 supported systems chart below to determine if you may access PCGO portal with your current system.

 Tip: go to <http://www.whatismybrowser.com/> to identify the browser that you are using

- a. Scroll down the chart to find your browser
- b. Then across to the browser's version
- c. Then across to the platform of your computer
- d. Make note of the result (e.g., yes, no) in the corresponding row of the TLS 1.2 column and continue on to step 2

Browser	Version	Platforms	TLS 1.2
Google Chrome	0–21	Android, iOS, Linux, Mac OS X, Windows (XP, Vista, 7, 8)	No
	22–29		No
	30–		Yes
Mozilla Firefox	1–22 ESR 10, 17	Android, Linux, Mac OS X, Windows (XP, Vista, 7, 8)	No
	23		No
	24–26		Yes, disabled by default



Browser	Version	Platforms	TLS 1.2
	ESR 24		
	27–		Yes
Internet Explorer	6	Windows (98, 2000, ME, XP)	No
	7–8	Windows XP	No
	7–9	Windows Vista	No
	8–10	Windows 7	Yes, disabled by default
	10	Windows 8	Yes, disabled by default
	11	Windows 7, 8.1	Yes
Opera	5–7	Android, iOS, Linux, Mac OS X, Windows	No
	8–9		No
	10–12		Yes, disabled by default
	14–16		No
	17–		Yes
Safari	1–6	Mac OS X –10.8	No
	7	Mac OS X 10.9	Yes
	3–5	iPhone OS 1–3, iOS 4.0	No
	5–6	iOS 5–6	Yes
	7	iOS 7	Yes
	3–5	Windows	No

Reference: http://en.wikipedia.org/wiki/Transport_Layer_Security#TLS_1.2



- Refer to result column in the chart below to understand what this means, and then determine your next action.

Result	Translation	Next Action
Yes	You should have no issue accessing PCGO	No further action needed
No	You cannot use the browser/platform combination	You may need to upgrade your current browser, or switch browsers. Refer back to step 1 and the TLS 1.2 supported systems chart; review the TLS 1.2 column to identify a browser/platform combination with marked Yes.
Yes, disabled by default	You need to enable the TLS 1.2 setting	Continue to step 3

- If your browser is disabled by default, then visit <https://www.mikestoolbox.org/> to determine if your browser has enabled the correct version of TLS to access the PCGO portal. You may need to accept the certificate/security warning as shown below.

```

*****
*** Mike's Toolbox Enhanced Multi-Threaded SSL/TLS Test Server ***
***
***      https://www.mikestoolbox.org/
***      https://www.mikestoolbox.org/
***
*** Mike's Toolbox contact info:
***
***      EMAIL:   mikes@toolbox.org
***      WEB:     http://www.mikestoolbox.org/
***      TWITTER: @mikestoolbox
***
*** Copyright (c) 2010 Michael J. ...
*****

Connection from:      [65.205.231.100]
Current time:        Wed, 12 Mar 2014 16:47:46 GMT
TLS negotiation time: 0.501671 seconds

Client Version:      TLS 1.2
Client Random:       50200FD19BDB631EDE6139AA14AA5B6A1ED8869C28D4CB0C5062BE3A3008242F
Client Random Time:  Wed, 12 Mar 2014 16:47:45 GMT

```

Look at the **Client Version**. If it is **TLS 1.2** or higher, then you can access PCGO without difficulty and will not need to take further action. If not, then proceed to step 2.



4. If TLS 1.2 is still disabled in your browser, your access point determines your next action to gaining access to PCGO. Refer to the chart below to determine how to enable TLS 1.2 based on your access point.

Access Point	Example	Next Action
Peace Corps computer	Volunteer lounge computer at Post	No further action needed
Non-Peace Corps computer	Internet café	<p>You may need to upgrade your current browser, or switch browsers.</p> <p>Refer back to step 1 and the TLS 1.2 supported systems chart to determine a compatible browser/platform combination marked Yes.</p> <p>Refer to the Related Resources section below for more information.</p>
Personal systems	One that you own and operate	<p>You may need to consult the help files included with the browser or operating system.</p> <p>Refer back to step 1 and the TLS 1.2 supported systems chart; review the TLS 1.2 column to identify a browser/platform combination with marked Yes.</p>

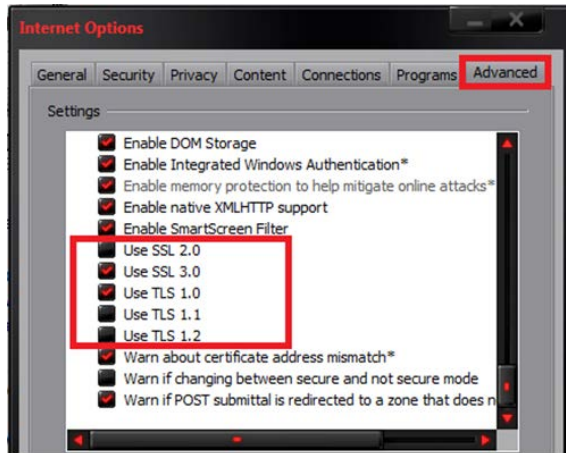


Related Resources

Below we have listed related resources by browses to help you gain access to PCGO.

Internet Explorer (IE)

- **Configure the browser:** For most versions of internet explorer go to your browser **Tools** menu and select **Internet Options**→**Advanced** tab and select the **Use TLS 1.2** checkbox. See example below:




- **Download IE browser:** <http://windows.microsoft.com/en-us/internet-explorer/ie-11-worldwide-languages>

Google Chrome

- **Download Chrome browser:**
https://www.google.com/intl/en/chrome/browser/?brand=CHMA&utm_campaign=en&utm_source=en-ha-na-us-bk&utm_medium=ha

Firefox

- For additional help and resources visit
https://blog.dbrgn.ch/2014/1/8/improving_firefox_ssl_tls_security/

 If you need additional help, please contact your grants coordinator.